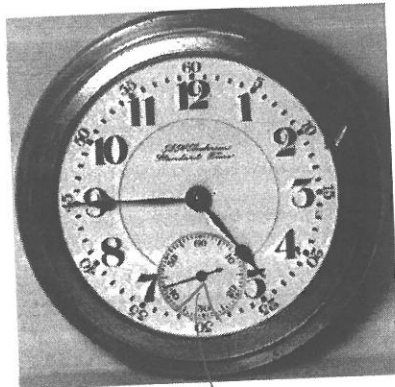


e) another clock:



$$\begin{aligned} \text{seconds} &= \frac{10 \text{ seconds}}{10 \text{ "ticks"}} \approx 1 \\ &= \boxed{1 \text{ second}} \end{aligned}$$

f) a digital watch



The smallest unit is 35 seconds.
One second later, the "seconds" will show 36.
The smallest unit of time is one second.
Precision is 1 second