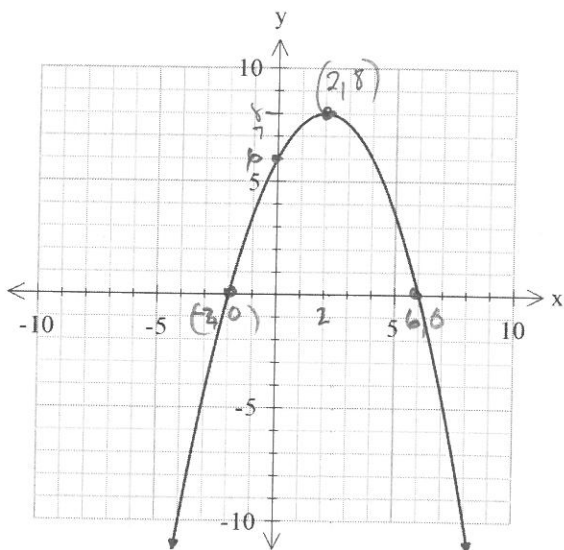


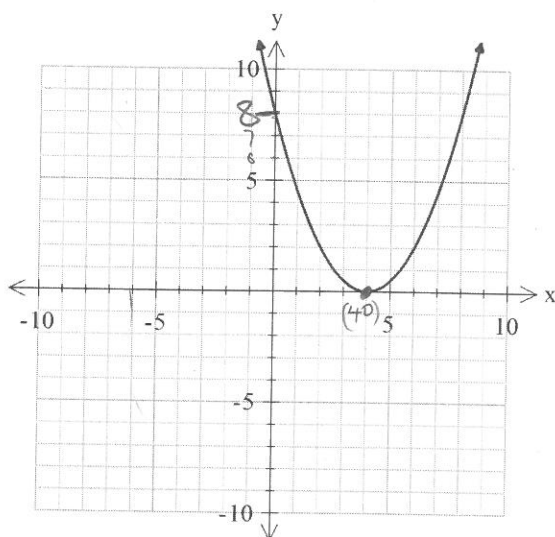
Using the vocabulary from Example 1, fill in the blanks for the quadratic functions in Examples 2 and 3.

Example 2



Direction of opening Down
 Sign of leading co-efficient Negative
 End behaviour Q III to Q IV
 y-intercept 6
 x-intercept(s) -2 and 6
 Vertex (2, 8)
 Minimum value none
 Maximum value 8
 Domain $(-\infty, \infty)$ or $(x/x \in \mathbb{R})$
 Range $(-\infty, 8]$ or $(y/y \leq 8, y \in \mathbb{R})$

Example 3



Direction of opening Upward
 Sign of leading co-efficient Positive
 End behaviour Q II to Q I
 y-intercept 8
 x-intercept(s) 4
 Vertex (4, 0)
 Minimum value 0
 Maximum value none
 Domain $(-\infty, \infty)$ or $(x/x \in \mathbb{R})$
 Range $[0, \infty)$ or $(y/y \geq 0, y \in \mathbb{R})$