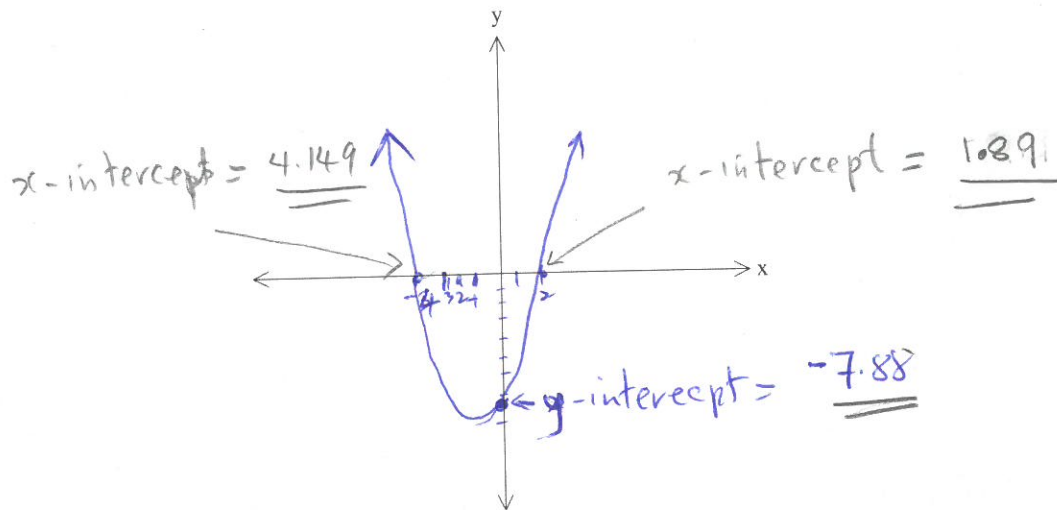


**Example 2: Sketching Quadratic Functions using Intercepts**

Sketch the graph of  $y = x^2 + 2.25x - 7.88$ . Label the y intercept and the x intercepts.

**Example 3**

Sketch the graph of  $y = -2.65x^2 + 3.9x + 12$ . Label the y intercept and the x intercepts.

