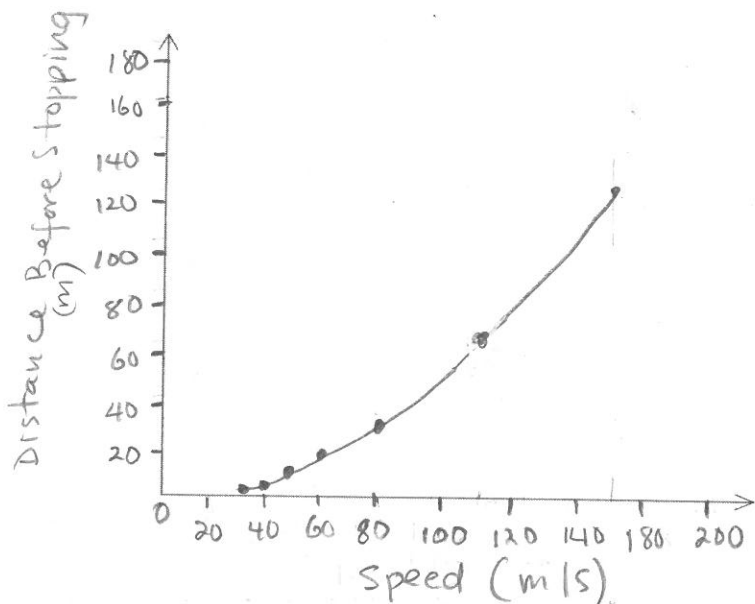


### Example 2

Enter the following data into your graphing calculator and use the Stat Plot feature to display the scatterplot.

- a) Sketch the scatterplot on the axes below. Be sure to include labels and a scale on each axis.

Speed (km/h)	Distance before stopping (metres)
50	14
80	36
60	20
110	68
40	9
30	5
150	126



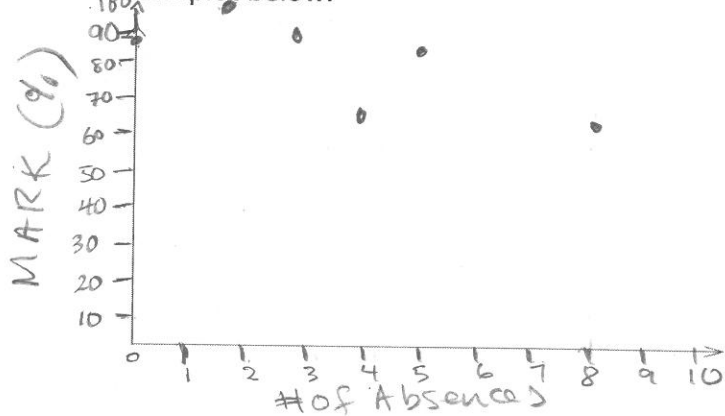
positive correlation

- b) Describe the relationship between speed and stopping distance. Use the graph to justify your answer. Higher the speed, the longer is the distance before stopping.

### Example 3

- a) Enter the data and examine the scatterplot. Sketch the scatterplot below.

# of Absences	Mark (%)
8	65
3	90
5	85
4	62
0	87
2	97



- b) Describe the trend in the data. Increase absences the lower the mark  
 c) What type of correlation exists? A downward trend.  
 This is a negative correlation.